

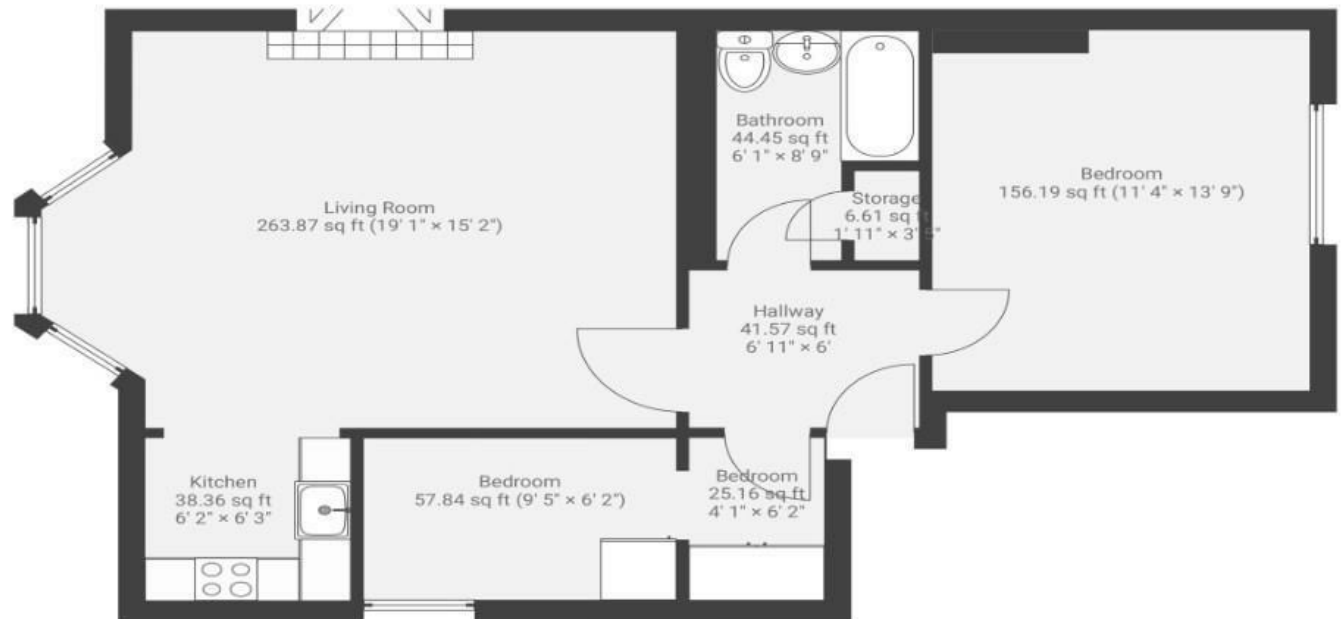
Somerset Street

KINGSDOWN

APPROXIMATE FLOOR AREA
65.0 SQM / 699 SQFT



FIRST FLOOR



Illustrations are for reference purposes only, measurements are approximate, not to scale.

Boardwalk

Somerset Street

KINGSDOWN, BRISTOL



£350,000



2 Bedrooms



BS2 8NB



1 Bathrooms

"Somerset Street and Kingsdown is a hidden gem; the old, cobbled streets and multicoloured houses have been an absolute joy to live amongst. Within walking distance of all that city has to offer, our first Bristol home is going to be hard to beat. Coming home to a view overlooking the skyline always takes our breath away, it's a unique privilege to call this place home."

